



SafeWork NSW



Research Forum

26 November 2015



New organisations



Our purpose is to help NSW workplaces be
healthy, safe & productive



Our role is to prevent workplace harm

Our mission is to build a strong safety culture
in NSW workplaces



How do we achieve this?

We work with the community to design and implement health and safety and return to work programs

We respond to workplace incidents and requests for service from the NSW community

We support business to better manage recovery at work and assist workers who are injured or ill

Our programs



We deliver *risk based* prevention programs focusing on harm reduction

- Focus on Industry
- Focus on Health
- Focus on Authorisations
- Focus on Regulatory Services
- Focus on National Initiatives

Initiatives

Centre for Work Health and Safety

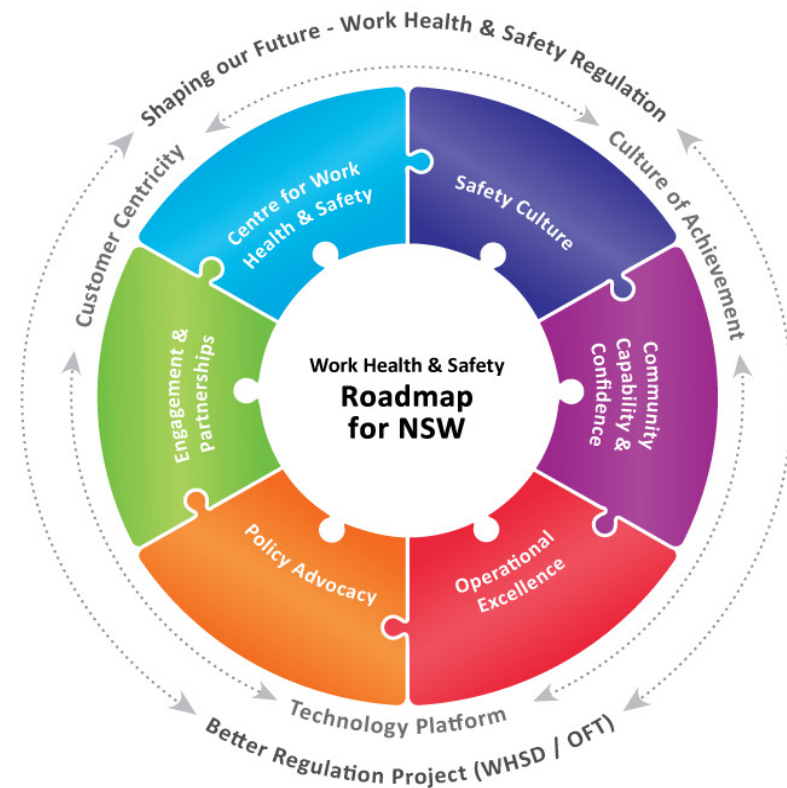
Safety Culture

Community Capability & Confidence

Operational Excellence

Policy Advocacy

Engagement and Partnerships





The **Centre for Work Health and Safety** will conduct collaborative research, analysis and promotion of innovative safety best practice.



Our research goals



We want to work with the broader research community to:

- measure the impact of what we do
- use evidence as a basis for our decisions
- foster critical thinking and innovative ideas
- add to the body of knowledge in work health and safety, workers compensation and injury management





We believe that **collaboration** and **communication** is the key to optimising research outcomes.



Emerging trends in WHS research



Better regulation – looking at the cost and effectiveness of regulation

Chronic conditions – looking at workplace environments and long term effects on the health of workers

Vulnerable workers – looking at issues for younger and older workers, people with disabilities, workers with poor literacy skills

Return to Work/Injury Management (RTW/IM) – finding out how to get injured workers back to work safely and quickly

Prevention – looking at early detection and early intervention



Research and Evaluation Reference Group (REG)

Role:

- Identify emerging issues – gain input from SafeWork NSW
- Discuss and decide on research priorities
- Identify where we can collaborate and share research outcomes
- Provide advice to Safe Work Australia members.





RERG Priorities for 15/16

- Measuring the effectiveness of interventions
- Safety leadership and culture
- Return to work
- Work related injuries
- Communicating effectively about risk
- Mental stress
- Policy development



safe work australia

Opportunities for researchers



Partnerships and funding – our website provides details on how you can get involved in our research program

<http://www.workcover.nsw.gov.au/law-and-policy/legislation-and-codes/research>

Unsolicited submissions - considerations

- ✓ Demonstrated need for new or improved knowledge
- ✓ Adequate information provided to support an assessment
- ✓ Must align to key result areas and any identified priority research areas.

Two way information sharing



We are interested in working in partnership with you so that we can exchange valuable insights and improve safety outcomes for the NSW community.

Want to know more?



<http://www.workcover.nsw.gov.au/law-and-policy/legislation-and-codes/research>



Disclaimer

This presentation may contain work health and safety and workers compensation information. It may include some of your obligations under the various legislation that SafeWork NSW administers. To ensure you comply with your legal obligations you must refer to the appropriate legislation in its most current form.

Information on the latest laws can be checked by visiting the NSW legislation website (www.legislation.nsw.gov.au) or by contacting the free hotline service on 02 9321 3333.

This presentation does not represent a comprehensive statement of the law as it applies to particular problems or to individuals or as a substitute for legal advice. You should seek independent legal advice if you need assistance on the application of the law to your situation.

Although all care has been taken to ensure that the information is correct at the time of publication, the laws change over time and you need to ensure that you are accessing the most current legislation to ensure that the information is up to date.

The information contained in this presentation is provided as a guide and it does not necessarily represent the views of SafeWork You may use this presentation for educational purposes in your organisation for internal training and development however, you are not permitted to edit, change or add to this presentation in any way. You are not allowed to remove this disclaimer from the presentation and you are not allowed to charge any fees for using this presentation.